

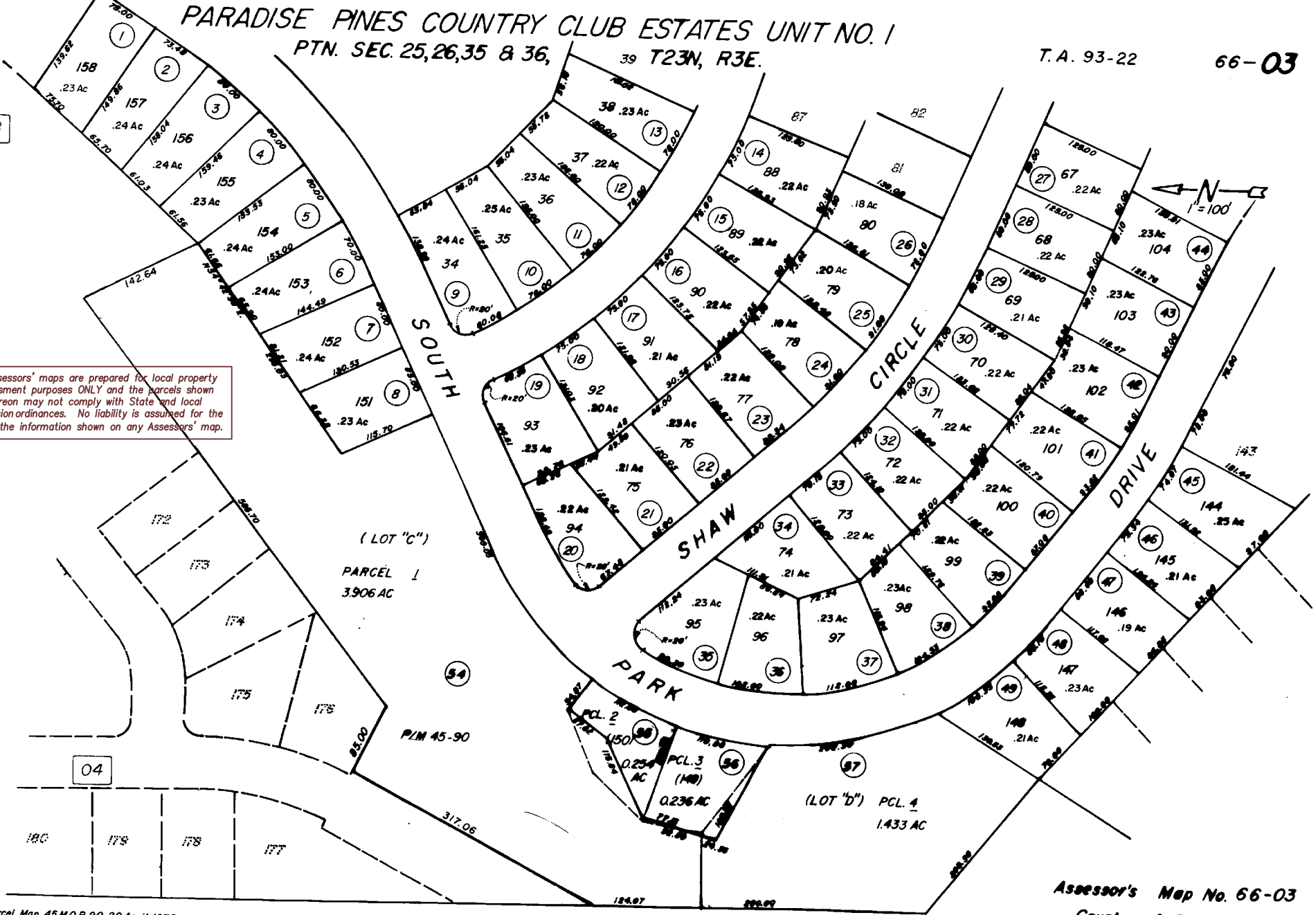
PARADISE PINES COUNTRY CLUB ESTATES UNIT NO. 1
 PTN. SEC. 25, 26, 35 & 36, 39 T23N, R3E.

T. A. 93-22

66-03

08

All Assessors' maps are prepared for local property assessment purposes ONLY and the parcels shown thereon may not comply with State and local subdivision ordinances. No liability is assumed for the use of the information shown on any Assessors' map.



04

Parcel Map 45 M.O.R. 90, 20 April 1973
 Paradise Pines Country Club Estates Unit No. 1, 38 M.O.R. 57, 58, 59 & 60, Rec. 14 Sept. 1971

Assessor's Map No. 66-03
 County of Butte, Cal.